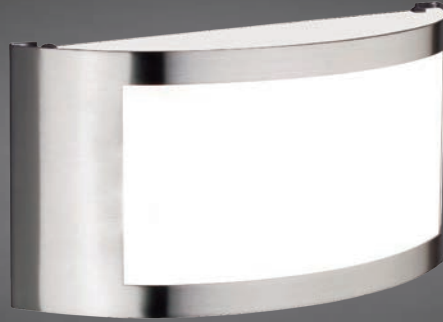


RICHMOND OW™ SCONCE

PROJECT: _____

TYPE: _____

QUANTITY: _____



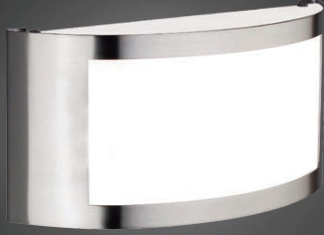
PN: RI6000W

APPLICATION	<ul style="list-style-type: none">• WALL MOUNT• INDOOR RATED• ADA COMPLIANT
DIMENSION	<ul style="list-style-type: none">• 5.37"W X 12.5"H (13.7CM X 32CM)• DEPTH: 3.87" (9.9CM)
ILLUMINATION	<ul style="list-style-type: none">• DIFFUSE• LED 90CRI• 637 LUMENS
ELECTRICAL	<ul style="list-style-type: none">• 120V, 277V AND 347V• 10kA SURGE SUPPRESSION STANDARD
DIFFUSERS	<ul style="list-style-type: none">• HIGH EFFICIENCY ACRYLIC
MOUNTING	<ul style="list-style-type: none">• WALL, MOUNTED TO A 4"(10CM) J-BOX
CONSTRUCTION	<ul style="list-style-type: none">• STEEL
FINISHES	<ul style="list-style-type: none">• AVAILABLE IN SEVERAL TMS PLATED, AND POWDER COATED FINISHES• CUSTOM RAL FINISHES AVAILABLE
DIMMING	<ul style="list-style-type: none">• 0 - 10V STANDARD DIMMING



DIFFUSE

RICHMOND OW™ SCONCE



PROJECT: _____

TYPE: _____

QUANTITY: _____

RI6000W

1 2 3 4 5 6 7 8

1.	ILLUMINATION										
	10LED										
	LED (W)	10W									
LUMENS	637										
2.	30K			35K			40K				
	LED CCT	3000			3500			4000			
3.	120			277			347				
	VOLTAGE	120V			277V			347V			
4.	---			INTD				RMD			
	DRIVER	NONE			INTEGRAL DRIVER				REMOTE DRIVER		
5	SN	CH	BC	AC	AB	SB	PB	F04	F05	F09	
	SATIN NICKEL	CHROME	BLACK CHROME	ANTIQUE COPPER	ANTIQUE BRASS	SATIN BRASS	POLISHED BRASS	MATTE WHITE	GLOSS WHITE	PEWTER	
	F15	F16	F18	F24	F25	F26	F31	F33	RAL		
FINISH	MATTE BLACK	GLOSS BLACK	SATIN ALUMINUM	MELTED PLATINUM	MELTED GOLD	MELTED COPPER	SILVER METALLIC	PYRITE BRONZE	CUSTOM (SPECIFY)		
6.	OP			SD				FPD			
	DIFFUSER	OPAL - WHITE ACRYLIC			SAND - BLASTED WHITE ACRYLIC				FAUX PERFORATED		
7.	---			DIML							
	DIMMING	NONE			LED DIMMING (0 - 10V, CURRENT - SINKING)						
8.	---			EMR							
	EMERGENCY ¹	NONE			REMOTE						

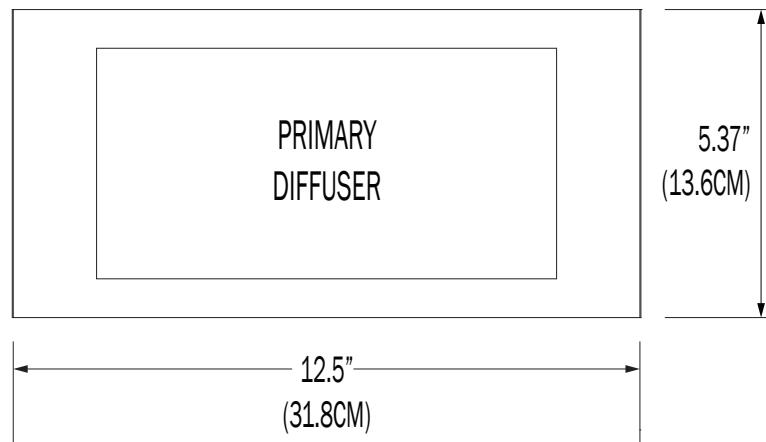
1. 10W AT 90 MINUTES. EMERGENCY OPTION IS ONLY AVAILABLE IN 120 - 277V SYSTEMS

NOTE: SOME OPTIONS MAY NOT BE COMPATIBLE WITH OTHERS. ALL SPECIFICATIONS ARE SUBJECT TO CHANGE WITHOUT NOTICE. CONTACT TMS LIGHTING FOR UPDATED SPECIFICATIONS.

TOP/BOTTOM



FRONT



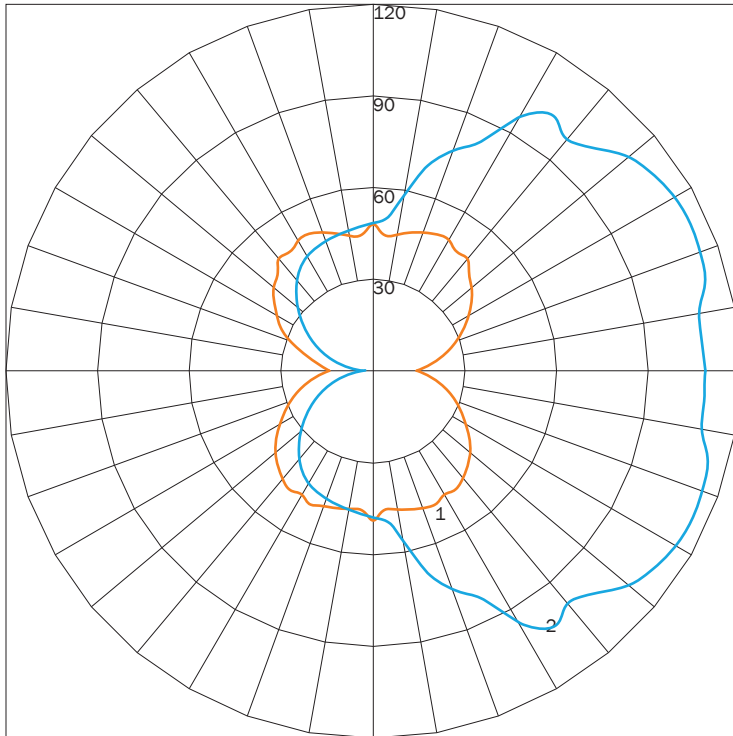
DIFFUSE

PN	ILLUMINATION	LUMENS	WATTAGE
RI6000W	10LED	637	10

IES INDOOR REPORT

PHOTOMETRIC FILENAME : RI600 OW 10LED SN OP 2.0.IES

POLAR GRAPH



MAXIMUM CANDELA = 114.03 - LOCATED AT HORIZONTAL ANGLE = 0, VERTICAL ANGLE = 120
 # 1 - VERTICAL PLANE THROUGH HORIZONTAL ANGLES (90 - 270)
 # 2 - VERTICAL PLANE THROUGH HORIZONTAL ANGLES (0 - 180)

LUMINAIRE LUMENS	637
TOTAL LUMINAIRE EFFICIENCY	NA
LUMINAIRE EFFICACY RATING	63
TOTAL LUMINAIRE WATTS	10

AVAILABLE FINISHES



SN
SATIN
NICKEL



CH
CHROME



BC
BLACK
CHROME



AC
ANTIQUÉ
COPPER



AB
ANTIQUÉ
BRASS



SB
SATIN
BRASS



PB
POLISHED
BRASS



F04
MATTE
WHITE



F05
GLOSS
WHITE



F09
PEWTER



F15
MATTE
BLACK



F16
GLOSS
BLACK



F18
SATIN
ALUMINUM



F24
MELTED
PLATINUM



F25
MELTED
GOLD



F26
MELTED
COPPER



F31
SILVER
METALLIC



F33
PYRITE
BRONZE



RAL
CUSTOM
COLOR
(RAL #)

NOTE: DISPLAYED FINISHES DIFFER BETWEEN SCREENS AS WELL AS PRINTERS AND MAY NOT ACCURATELY DEPICT COLOR.