

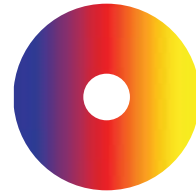
STANDARD FINISHES

TMSLIGHTING



F05
WHITE

Note: All finish options may not be available for all products. Please see product details.



RAL
CUSTOM COLOR
(RAL #)



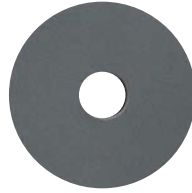
F06
CLAY



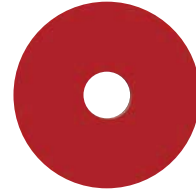
F07
ZEUS BROWN



F08
MIDNIGHT BLUE



F09
PEWTER



F10
FIRE RED



F13
FOREST GREEN



F14
SUNSHINE YELLOW



F15
MATTE BLACK



F16
GLOSS BLACK



F18*
FLAT ALUMINUM



F19*
MIRROR SILVER



F21
ARCHITECTURAL
BRONZE



F22*
HARVEST GOLD



F24*
MELTED PLATINUM
(textured)



F25*
MELTED GOLD
(textured)



F26*
MELTED COPPER
(textured)



F28*
DARK CHAMPAGNE



F31*
SILVER METALLIC



F32*
METALLIC BRONZE



F33*
PYRITE BRONZE



F34*
BURNT ORANGE

www.tmslighting.com



Note: All finish options may not be available for all products. Please see product details.

All TMS fixtures are powder-coated with white (F05), unless otherwise specified.

Colors marked with an asterisk (*) are applied on the inside and outside of RLM reflectors. Eg. a reflector specified with F22* (harvest gold) would be coated on both sides. Otherwise, the outer surface would be coated with the specified finish, and the inner surface coated with white. Please refer to the product specifications for availability. For alternate plated finishes and diffusers, contact TMS Lighting for assistance.

SPECIALTY FINISHES (MATERIALS)

Note: All material options may not be available for all products. Please see product details.



AL-BR
ALUMINUM
(BRUSHED)



SS
STAINLESS STEEL
(BRUSHED)



GAL
GALVANIZED
(HOT-DIPPED)



CO
SOLID COPPER
(BRUSHED)



BY
SOLID BRASS
(BRUSHED)



SS-POL
STAINLESS STEEL
(POLISHED)



AN
BRIGHT ANODIZED



BR-POL
SOLID BRASS
(POLISHED)



AG
AGED BRASS
(BRUSHED)

PLATED FINISHES (indoor only)

Note: All finish options may not be available for all products. Please see product details.



SN
SATIN NICKEL



SB
SATIN BRASS



PB
POLISHED BRASS



AB
ANTIQUÉ BRASS



CH
CHROME



BC
BLACK CHROME



AC
ANTIQUÉ COPPER

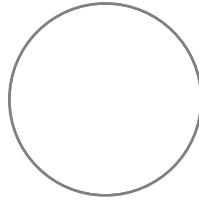
www.tmslighting.com

All TMS fixtures are powder-coated with white (F05), unless otherwise specified.

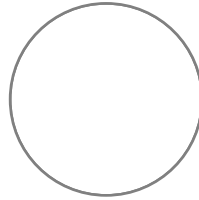
Colors marked with an asterisk (*) are applied on the inside and outside of RLM reflectors. Eg. a reflector specified with F22* (harvest gold) would be coated on both sides. Otherwise, the outer surface would be coated with the specified finish, and the inner surface coated with white. Please refer to the product specifications for availability. For alternate plated finishes and diffusers, contact TMS Lighting for assistance.

ACRYLIC DIFFUSERS

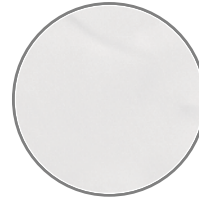
Note: All diffuser options may not be available for all products. Please see product details.



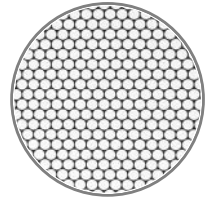
OP
OPAL-WHITE



MW
MATTE WHITE



PE
PEARL



SP
WHITE
SIMULATED PERF.
(indoor only)



WA
WHITE
FAUX ALABASTER



BA
BEIGE
FAUX ALABASTER

www.tmslighting.com



All TMS fixtures are powder-coated with white (F05), unless otherwise specified.

Colors marked with an asterisk (*) are applied on the inside and outside of RLM reflectors. Eg. a reflector specified with F22* (harvest gold) would be coated on both sides. Otherwise, the outer surface would be coated with the specified finish, and the inner surface coated with white. Please refer to the product specifications for availability. For alternate plated finishes and diffusers, contact TMS Lighting for assistance.